



Woburn Avenue, Theydon Bois, CM16

BUTLER  STAG



Guide Price £225,000 - £250,000.

A well presented studio apartment located on the first floor of this popular purpose built block.



Leasehold

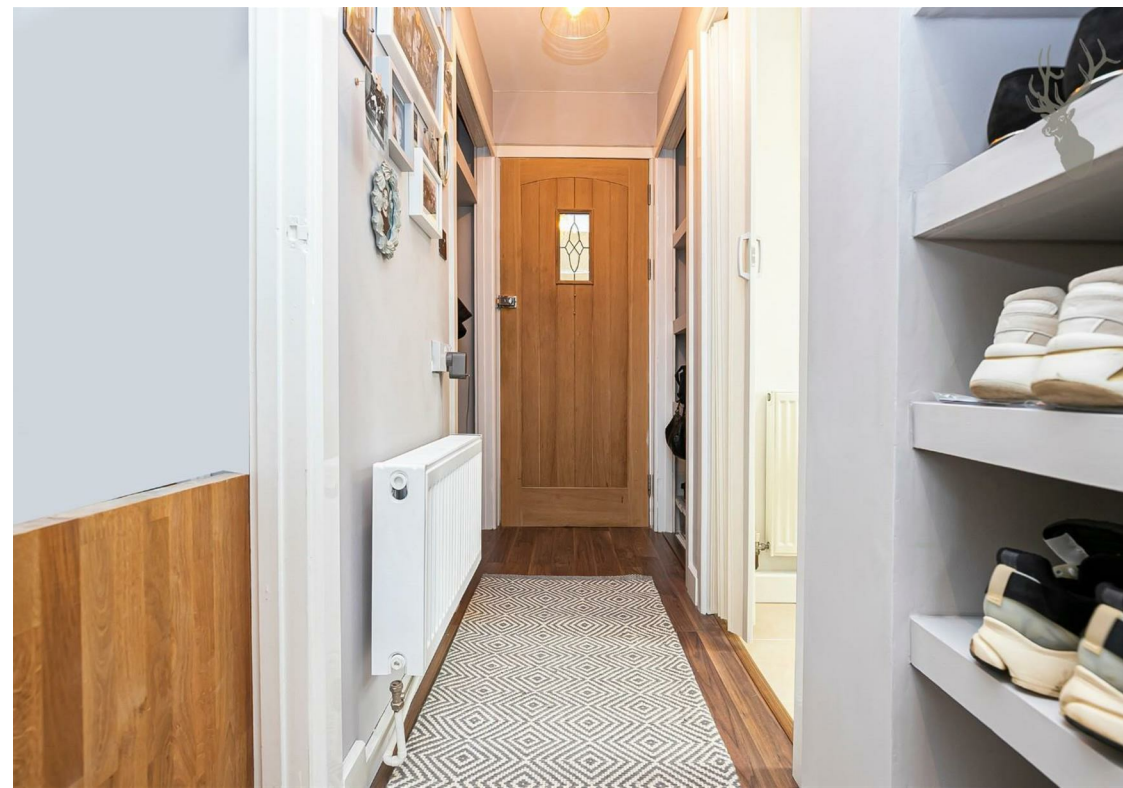
- Sold by Butler and Stag
- Good Size Lounge
- Village Location
- Studio Apartment
- Well Presented
- Fantastic First Time Purchase
- Close to Tube & Amenities

Presented in good condition throughout with accommodation comprising of an entrance hallway, stylish bathroom, bedroom, a good size sitting room, and a separate kitchen.

Externally the property has parking,

The village is arranged around the green, complete with duck pond, and offers a parade of shops, several pubs and restaurants and easy access into Epping Forest. Transport links into London are excellent and there are several well regarded state and private schools within easy reach. Local leisure facilities include golf courses, sports centres and a tennis club.

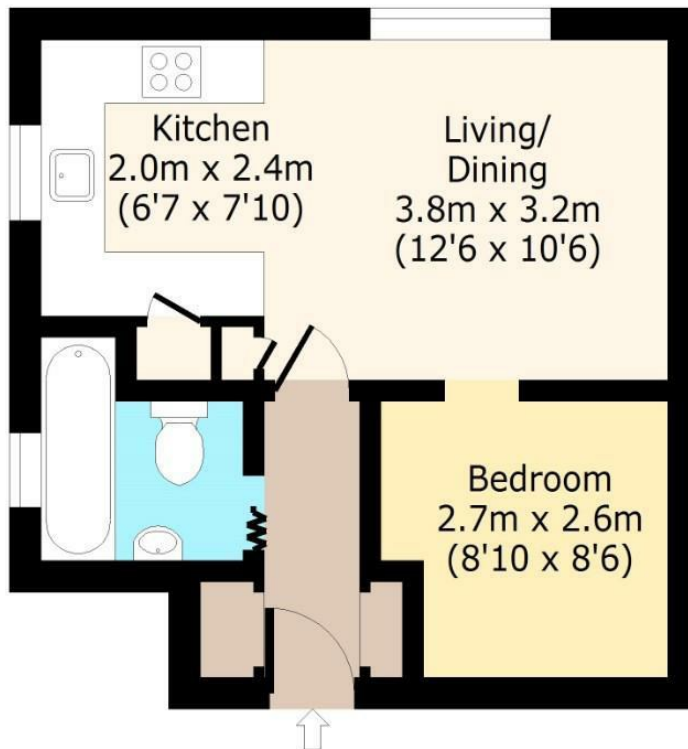




Woburn Avenue,

First Floor

Approx. 34 Sq. meters (363 Sq. feet)



Total area: approx. 34 Sq. meters (363 Sq. feet)

For illustration purposes only - not to scale

www.lpaplus.com

IMPORTANT NOTICE - These particulars have been prepared in good faith and they are not intended to constitute part of an offer or contract. We have not performed a structural survey on this property and the services, appliances and specific fittings have not been tested. All photographs, measurements, floor plans and distances referred to are given as a guide and should not be relied upon.

BUTLER & STAG

☎ 01992 667666

🏠 4 Forest Drive, Theydon Bois, Essex, CM16 7EY

✉ theydon@butlerandstag.com

www.butlerandstag.uk